



VW1100(1)M / VW2500M series wireless Module

Vitalwell Electronics (Zhuhai) Pte. Ltd.

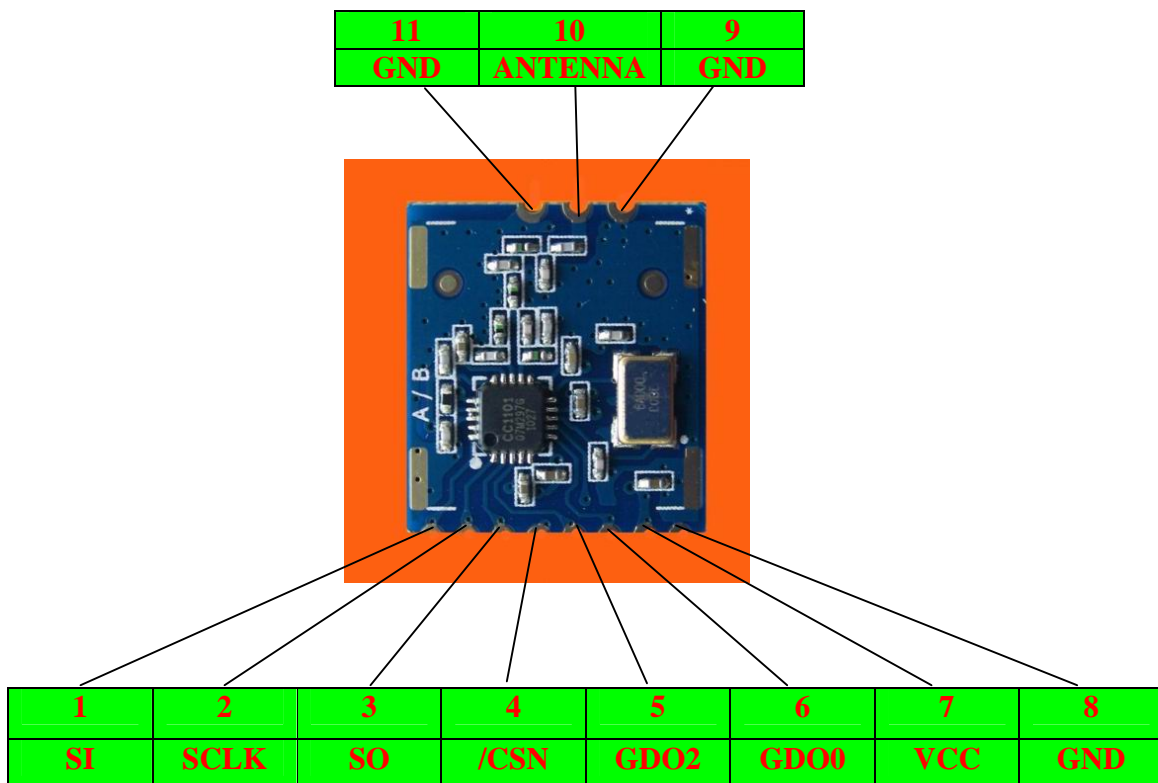


珠海元井电子有限公司
珠海唐家南方软件园 D3-415/416
中国珠海市
电话: +86-0756-3867295

Vitalwell Electronics (Zhuhai) Pte. Ltd.
Block D3, #415/416, Southern Software Park,
TangJia, ZhuHai, China
Tel: +86-0756-3867295

Features

- | Radio chip: Chipcon CC1100(VW1100M); CC1101 (VW1101M); CC2500(VW2500M)
 - | Frequency Band: 433MHz/868MHz/915MHz /2.4GHz
 - | Integrated FEC, high sensitivity.
 - | Programmable data rate up to 500 kbps.
 - | Separate 64-byte RX and TX data FIFOs.
 - | Efficient SPI interface: All registers can be programmed with one "burst" transfer
 - | Wake-on-radio functionality for automatic low-power RX polling
 - | Many powerful digital features allow a high-performance RF system to be made using an inexpensive microcontroller
 - | Integrated analog temperature sensor
 - | Ideal for multi-channel operation
 - | 2-FSK, GFSK, MSK and OOK supported
 - | Small size: L x W x H = 19mm x 17mm x 3mm
-
- | Interface footprint : 2.0mm SMT solder pad or pin header
-
- | Same footprint for VW1100/1M & VW2500M, different system's design can share the same PCB layout



珠海元井电子有限公司
珠海唐家南方软件园 D3-415/416
中国珠海市
电话: +86-0756-3867295

Vitalwell Electronics (Zhuhai) Pte. Ltd.
Block D3, #415/416, Southern Software Park,
TangJia, ZhuHai, China
Tel: +86-0756-3867295

Recommended PCB layout for package:

Solder pads at the interface side (W x L) : 1.35mm x 1.85mm

Solder pads at the antenna side (W x L) : 1.6mm x 2mm

